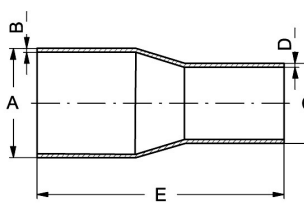
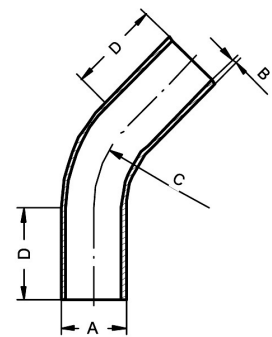
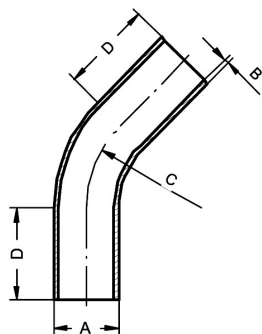
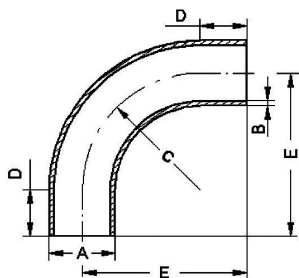


Pipe components for Bulk material							Art.No	EUR	Art.No	EUR
Reducing piece 	DN	A	B	C	D	E			AISI304	
	88,9-84	88,9	2	84	2	300			573255	92,40
	101,6-60,3	101,6	2	60,3	2	300			573256	131,30
	101,6-70	101,6	2	70	2	300			573257	143,20
	101,6-76,1	101,6	2	76,1	2	300			573258	133,90
	101,6-80	101,6	2	80	2	300			573259	132,10
	101,6-84	101,6	2	84	2	300			573260	131,50
	101,6-88,9	101,6	2	88,9	2	300			573261	131,20
	104-80	104	2	80	2	300			573265	93,90
	104-84	104	2	84	2	300			573266	95,30
	104-88,9	104	2	88,9	2	300			573267	95,30
	104-100	104	2	100	1,5	300			573268	99,10
	104-101,6	104	2	101,6	2	300			573269	98,30
	Pipe bend 45°, large radius 	DN	A	B	C	D			AISI304	
38-R70		38	1,5	70	100			572701	32,10	
38-R250		38	1,5	250	100			572702	41,40	
38-R500		38	1,5	500	100			572703	42,80	
40-R75		40	1,5	75	100			572704	35,70	
40-R250		40	1,5	250	100			572705	47,10	
40-R500		40	1,5	500	200			572706	47,10	
45-R75		45	1,5	75	100			572736	36,90	
45-R300		45	1,5	300	200			572707	41,40	
45-R500		45	1,5	500	200			572737	46,10	
50-R75		50	1,5	75	100			572708	35,50	
50-R250		50	1,5	250	100			572709	41,40	
50-R500		50	1,5	500	200			572710	47,10	
50-R800		50	1,5	800	200			572711	96,50	
50-R1000		50	1,5	1000	200			572738	96,50	
54-R150		54	2	150	100			572739	68,80	
54-R250		54	2	250	100			572740	60,40	
54-R500		54	2	500	200			572712	73,70	
60,3-R115		60,3	2	115	150			572713	58,20	
60,3-R250		60,3	2	250	200			572714	78,30	
60,3-R500		60,3	2	500	200			572715	76,60	
60,3-R800		60,3	2	800	200			572716	117,90	
60,3-R1000		60,3	2	1000	200			572741	125,10	
65-R115		65	2	115	150			572717	70,90	
65-R250		65	2	250	200			572718	88,50	
65-R500		65	2	500	200			572719	100,40	
65-R800		65	2	800	200			572720	147,50	
70-R500		70	2	500	200			572721	115,10	
70-R800		70	2	800	200			572722	150,30	
70-R1000		70	2	1000	100			572742	150,30	
76,1-R500	76,1	2	500	200			572743	122,40		
LINNEMANN Rohrverbindungen • Edelstahlarmaturen Pipe connections • Stainless steel fittings										
LINNEMANN GmbH • Heerweg 14 – 16 72070 Tübingen / Germany			Fon: +49 (0) 7071 97555-0 Fax: +49 (0) 7071 97555-10			E-Mail: info@linnemann-online.com Internet: www.linnemann-online.com				

Pipe components for Bulk material
Art.No
EUR
Art.No
EUR
Pipe bend 45°, large radius


DN	A	B	C	D			AISI304	
76,1-R800	76,1	2	800	200			572723	165,10
76,1-R1000	76,1	2	1000	200			572744	158,30
80-R150	80	2	150	200			572724	108,10
80-R500	80	2	500	200			572725	115,20
80-R800	80	2	800	200			572726	172,50
80-R1000	80	2	1000	200			572727	186,80
84-R500	84	2	500	200			572728	126,30
84-R800	84	2	800	200			572729	172,40
88,9-R500	88,9	2	500	200			572730	129,60
88,9-R800	88,9	2	800	200			572731	172,40
101,6-R500	101,6	2	500	200			572745	147,40
101,6-R800	101,6	2	800	200			572746	170,10
101,6-R1000	101,6	2	1000	200			572732	195,70
104-R500	104	2	500	200			572747	180,60
104-R800	104	2	800	200			572748	175,70
104-R1000	104	2	1000	200			572733	206,90
114,3-R800	114,3	2	800	200			572749	204,50
114,3-R1000	114,3	2	1000	200			572750	204,50
129-R1000	129	2	1000	200			572734	425,30

Pipe bend 90°, large radius


DN	A	B	C	D	E			AISI304	
38-R70	38	1,5	70	100	175			572801	44,20
38-R250	38	1,5	250	100	350			572802	47,10
38-R500	38	1,5	500	100	600			572803	50,20
40-R75	40	1,5	75	100	175			572804	44,30
40-R250	40	1,5	250	100	350			572805	52,50
40-R500	40	1,5	500	200	700			572806	53,10
45-R75	45	1,5	75	100	175			572836	41,20
45-R300	45	1,5	300	200	500			572807	50,20
45-R500	45	1,5	500	200	700			572837	55,60
50-R75	50	1,5	75	100	175			572808	44,20
50-R250	50	1,5	250	100	350			572809	44,20
50-R500	50	1,5	500	200	700			572810	56,20
50-R800	50	1,5	800	200	1000			572811	135,80
50-R1000	50	1,5	1000	200	1200			572838	135,80
54-R150	54	2	150	100	250			572839	90,70
54-R250	54	2	250	100	350			572840	74,30
54-R500	54	2	500	200	700			572812	82,60
60,3-R115	60,3	2	115	150	265			572813	76,60
60,3-R250	60,3	2	250	200	450			572814	88,50
60,3-R500	60,3	2	500	200	700			572815	88,50
60,3-R800	60,3	2	800	200	1000			572816	132,80
60,3-R1000	60,3	2	1000	200	1200			572841	159,60
65-R115	65	2	115	150	265			572817	82,60